

# For Sale By Owner: 1150 Gulfstream Way, Singer Island

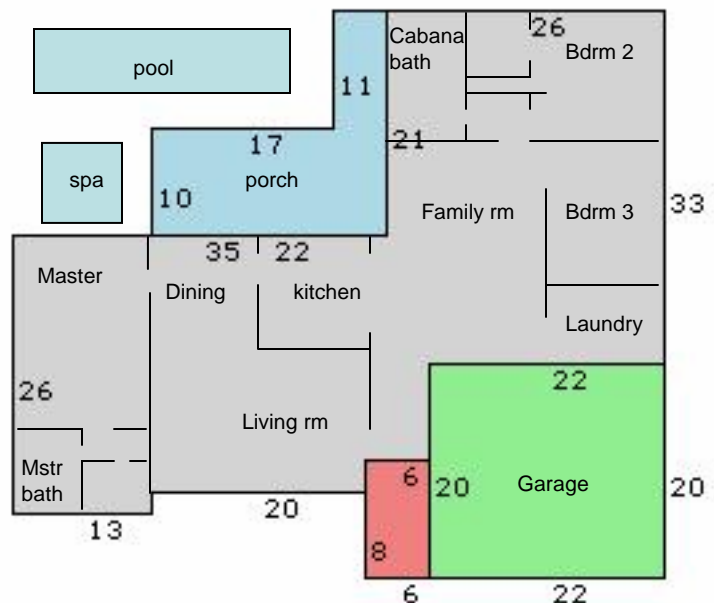


**\$699,999**  
"Sold As Is"  
No Agents Please

Single Family Property, Subdivision: Palm Beach Isles, County: Palm Beach, Municipality: Riviera Beach  
Year Built: 1973, Single story: For more pictures and details visit: <http://mmpulse.com/house>

## Property Features

- 3 total bedroom(s)
- 2 total bath(s) – includes cabana
- Approx. 1760 sq ft under air
- Approx. 275 sq ft enclosed porch
- Approx. 440 sq ft 2 car garage
- Approx. 2535 total sq ft
- Master bedroom is 12 X 14
- Walk-in closets in Mstr & Bdrm 2
- Living room is 11 X 20
- Dining room 11x10
- Family room is 12 x 15
- Kitchen is 13 X 11
- Laundry room is 10 x 7
- Heating features: Central (New in 2002)
- Central air conditioning (New in 2002)
- Large pool: pebble-tec/pump/upgrades - 2002
- Spa: 5 person Vita Spa (New 2002)



**Interior features:** Split floor plan, LG Stainless whisper dishwasher (New), All Stainless GE Profile appliances (New 2003)- Convection microwave oven and Range, Refrigerator, Wine cooler, Glass block bar, Clothes dryer, Clothes washer, Ceramic tile flooring throughout main living areas (New 2001), 2nd bedroom is 11x12, 3rd bedroom is 11 x 12 (with New Berber carpet), central vacuum and central stereo speakers.

**Exterior features:** Enclosed porch, Automatic garage door, Glass sliders, Southern exposure, Fenced/hedged backyard, Front door (New 2002), Covered porch, Automatic sprinkler system, Circular driveway, Public sewer service, Public water supply (water heater New in 2003), Exterior construction: Concrete block/Stucco - Roofing: Concrete (New in 2001) - PBI deeded beach access - Pets allowed Palm Beach Isles Association fee \$100/year - Dock rental for up to 33' boat directly across the street a good possibility.

Front of House  
(This drawing is an approximate layout, **not to scale**, the base image was pulled from the PB Property Appraiser Website)

**Open House**  
**Sunday's 1-4**

For more details or to schedule a showing, please contact:  
Mike or Kristin Blasdell: h 561-841-7412 - c 561-373-2405 - e [Blaze@Mindharbor.com](mailto:Blaze@Mindharbor.com)